

Overview of JCAB Organization

Date: March 1, 2016

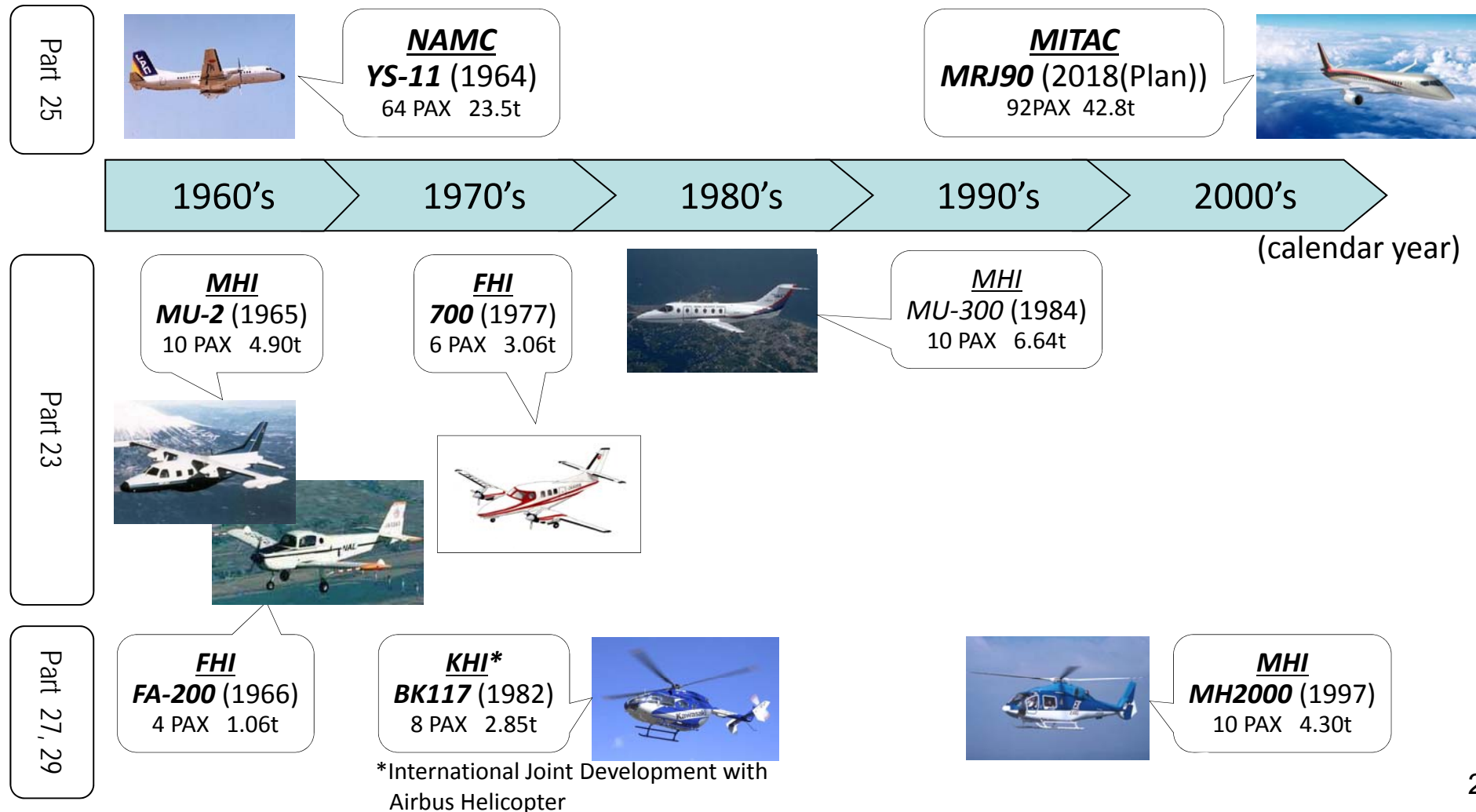
Presenter: Akihiro MATSUMURA (Mr.)

Aircraft Engineering and Certification Center (AECC)
Civil Aviation Bureau of Japan (JCAB)

- **Japanese Civil Airplane development**
- **Overview of MRJ**
- **Organization of MLIT/JCAB/AECC**
- **Cooperation Between FAA/JCAB**

History of Japanese Civil Airplane development

The first passenger airplane (part 25) in half a century is being developed. In the meantime, several types of small airplanes(part 23) and rotorcrafts(part 27,29) have been developed.

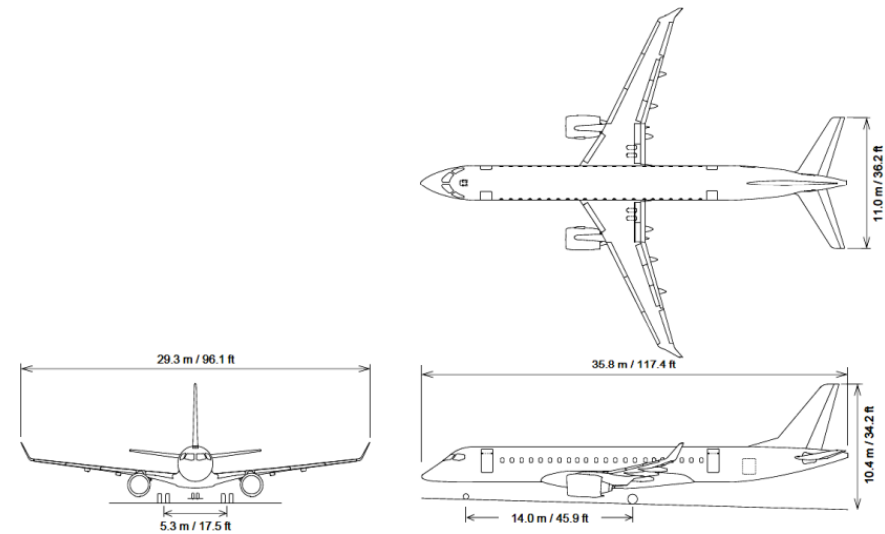


Overview of Mitsubishi Regional Jet (MRJ90)








Image Rendering

- First Large Jet Airplane in Japan (70 - 90 Seats)
- Demand of targeted Market in the next 2 decades is expected to be +5,000



SALES

All Nippon Airways		25
Trans States Holdings		100
SkyWest, Inc.		200
Air Mandalay		10
Eastern Air Lines Group, Inc.		40
Japan Airlines		32

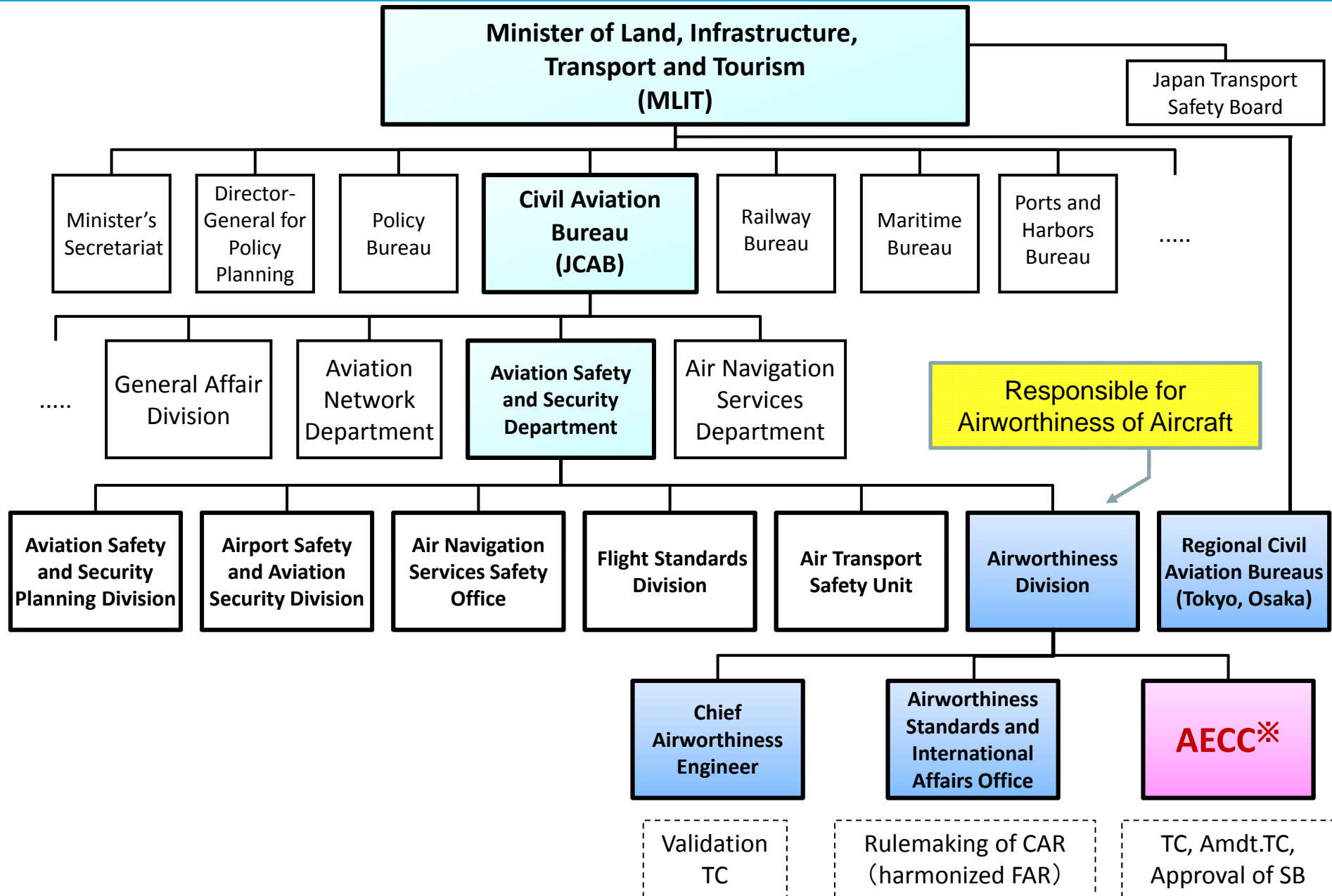
Contracts (Fixed + Option) : 407

PRINCIPAL CHARACTERISTICS*

MTOM	: 42,800kg
TKOF Length	: 1,740m
Max Speed	: .78 Mach (about 830 km/h)
LDG Length	: 1,480m
Max Range	: 3,770km
Max CRZ ALT	: FL390
Seat Capacity	: 92 (MRJ90)

* It's possible to change 3

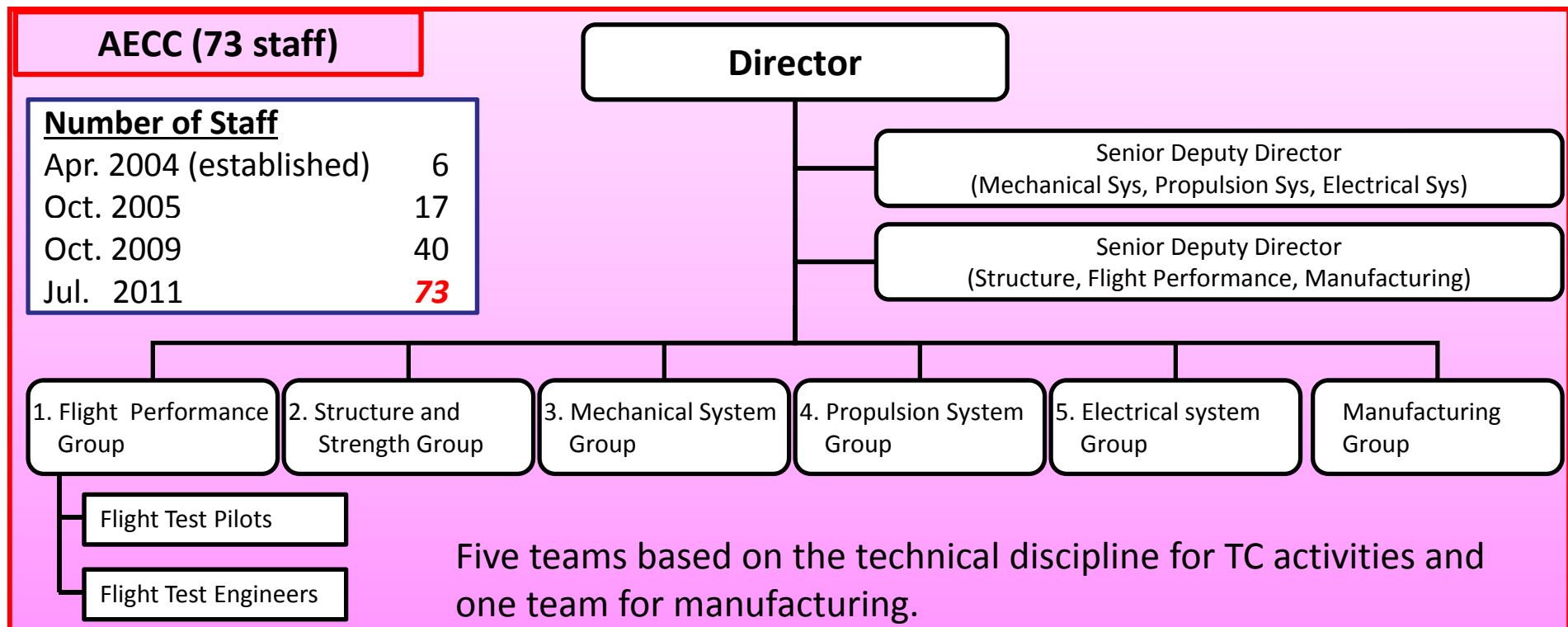
Organization of MLIT/JCAB



In 2004, **AECC** (Aircraft Engineering & Certification Center) was established to enhance JCAB certification capability at Nagoya region, which have major aerospace manufacturers and various suppliers.

AECC is responsible for type certification of made-in-Japan aircraft.

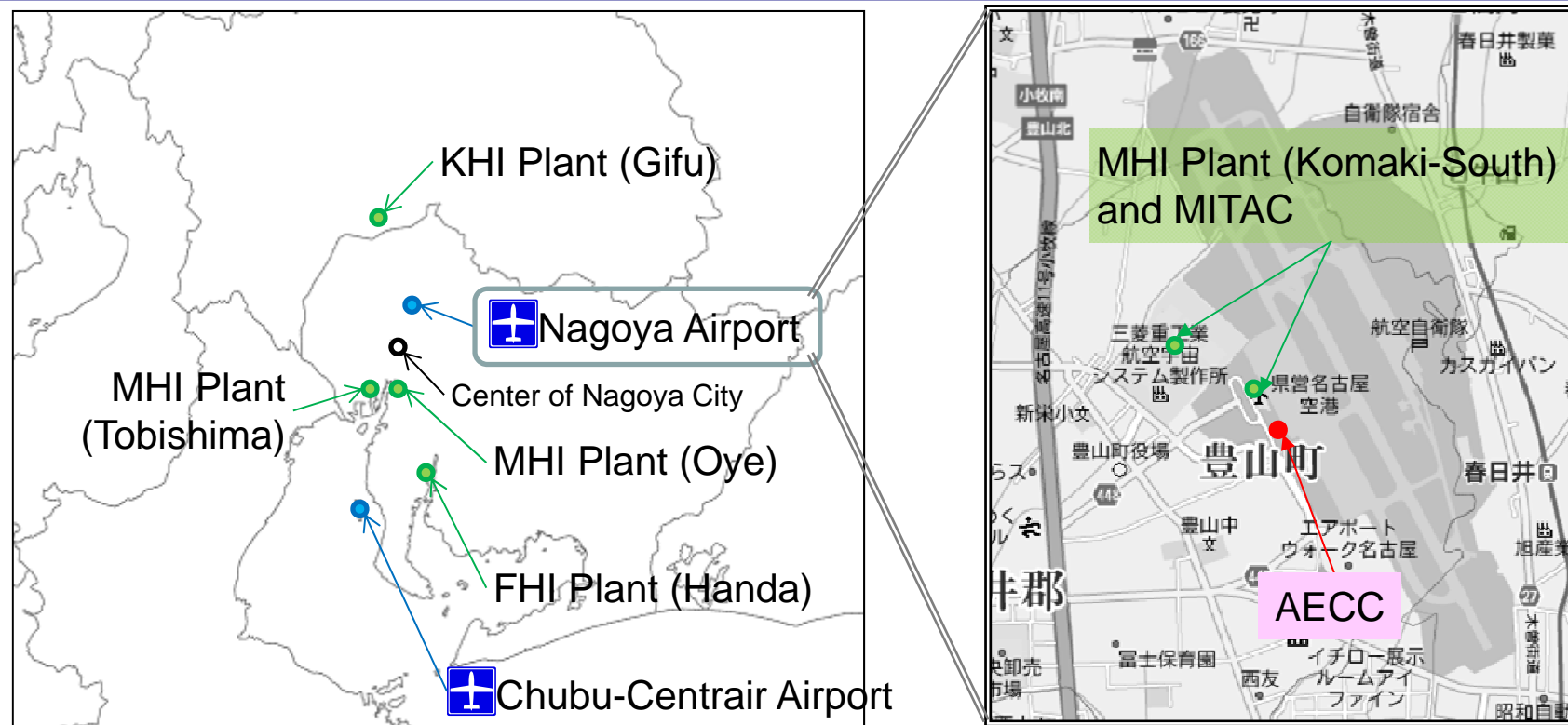
The number of qualified staff has been increasing since AECC was established.



Location of AECC

AECC is located in the Nagoya Airport Management Building which is next to the headquarter of Mitsubishi Aircraft Corporation(MITAC) at Nagoya Airport Terminal Building.

Around the Nagoya City, aircraft manufacturing plants of Mitsubishi Heavy Industries (MHI), Kawasaki Heavy Industries (KHI) and Fuji Heavy Industries (FHI) are located.



- Type Certification and Amendment Type Certification of Made-in-Japan Aircraft, including the followings.
 - ✓ Evaluation of analysis documents, Test witness, etc.
 - ✓ Approval of Flight Manual
 - ✓ Approval of Service Bulletin

- Collaboration with the Headquarters which is in charge of Type Approval of Made-in-Japan Engines and Propellers, including the followings.
 - ✓ Evaluation of analysis documents, Test witness, etc.
 - ✓ Approval of Service Bulletin

- Collaboration with the regional office which is in charge of supervising approved aircraft organization.

FAA has kindly supported JCAB for providing training to JCAB technical specialists. JCAB has invited FAA specialists to Japan as instructors almost every year. JCAB also sends our specialists to FAA academy.

Strengthened training

- Internal specialty training by safety expert and knowledgeable/ experienced staff within AECC
- Training in AECC by FAA technical experts (Instructor deployed from FAA)

2011 Fatigue & DT

- Training at FAA Academy and US universities etc.

2013 ASE Airframe @FAA Academy

2014 Sustainment and Continued Airworthiness
for Aircraft Structure @Kansas University



*Thank you very much for your
kind attention!*