

A scenic view of a tropical beach with a line of palm trees on the left, a clear blue ocean extending to the horizon, and a clear blue sky. A dark green, wavy banner is overlaid at the bottom of the image.

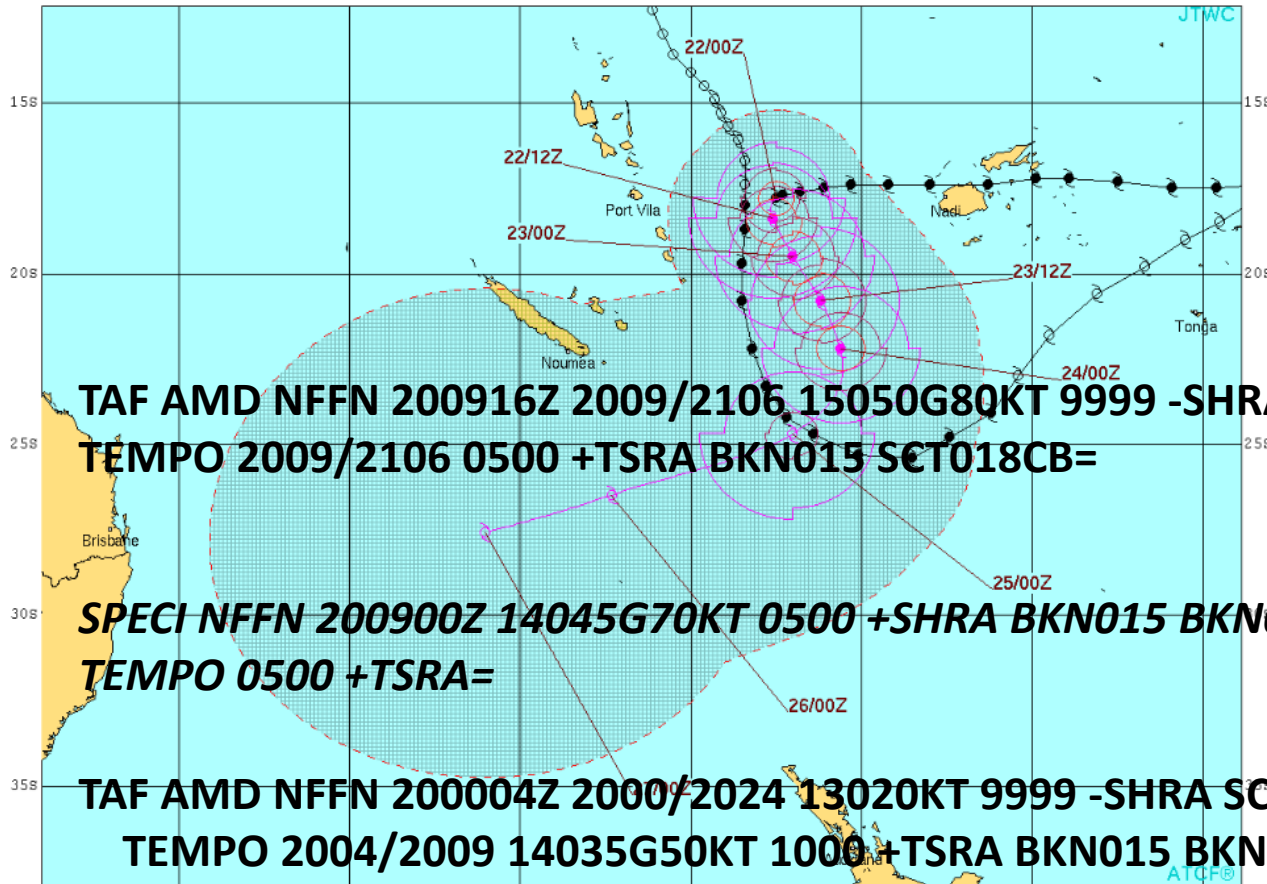
# Pacific Met – A Fiji Airways perspective...

# Nice day in Paradise....?



# Not always the case....

TC Winston – 20<sup>th</sup> Feb 2016



TROPICAL CYCLONE 11P (WINSTON) WARNING #36  
 WFPS31 FGTW 220300  
 220000Z POSIT: NEAR 17.8S 172.5E  
 MOVING 240 DEGREES TRUE AT 02 KNOTS  
 MAXIMUM SIGNIFICANT WAVE HEIGHT: 36 FEET  
 22/00Z, WINDS 095 KTS, GUSTS TO 115 KTS  
 22/12Z, WINDS 100 KTS, GUSTS TO 125 KTS  
 23/00Z, WINDS 100 KTS, GUSTS TO 125 KTS  
 23/12Z, WINDS 090 KTS, GUSTS TO 110 KTS  
 24/00Z, WINDS 080 KTS, GUSTS TO 100 KTS  
 25/00Z, WINDS 055 KTS, GUSTS TO 070 KTS  
 26/00Z, WINDS 045 KTS, GUSTS TO 055 KTS  
 27/00Z, WINDS 040 KTS, GUSTS TO 050 KTS

CPA TO:	NM	DTG
SUVA	306	23/11Z
NOUMEA	278	25/23Z
KINGSTON_IS.	180	26/05Z

BEARING AND DISTANCE	DIR	DIST (NM)	TAU (HRS)
SUVA	254	318	24

0-LESS THAN 34 KNOTS  
 34-LESS THAN 63 KNOTS  
 63-MORE THAN 63 KNOTS  
 PAST 6 HOURLY CYCLONE POSITS IN BLACK  
 FORECAST CYCLONE POSITS IN COLOR

**TAF AMD NFFN 200916Z 2009/2106 15050G80KT 9999 -SHRA BKN020 BKN042 OVC100  
 TEMPO 2009/2106 0500 +TSRA BKN015 SCT018CB=**

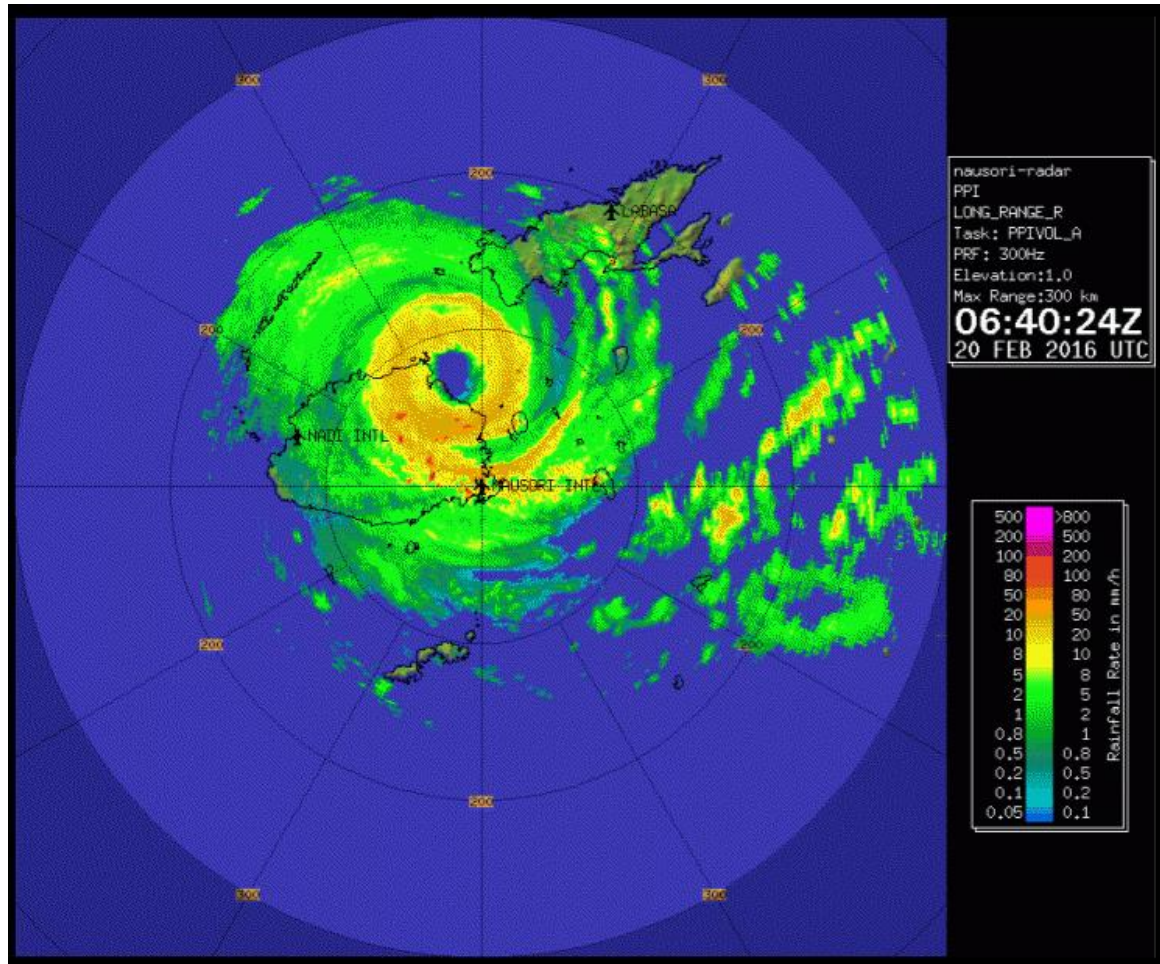
**SPECI NFFN 200900Z 14045G70KT 0500 +SHRA BKN015 BKN040 OVC100 26/26 Q0975  
 TEMPO 0500 +TSRA=**

**TAF AMD NFFN 200004Z 2000/2024 13020KT 9999 -SHRA SCT024 BKN100  
 TEMPO 2004/2009 14035G50KT 1000 +TSRA BKN015 BKN050  
 TEMPO 2009/2024 16050G70KT 0500 +TSRA BKN016 FEW018CB=**



# TC Winston – about to make landfall in Fiji.

From the NZ met service Blog



# Pacific Met – can be summed up in one phrase...



- ◆ PROB30 TEMPO 5000 SHRA BKN015
- ◆ Covers everything...
- ◆ including one's own posterior !



## ◆ Two seasons – Dry & Wet

### ◆ Dry – May to October

- ◆ Temperature 28C daytime / 18C overnight.

### ◆ Wet – November to April

- ◆ Temperature 33C daytime / 26C overnight.
- ◆ Cyclone season – November to March.
- ◆ Fiji averages 3 CAT 1-3 cyclones in its near vicinity each season, and 1 “direct hit” every 3 years. Last Major cyclone was Winston, a Cat 5 in Feb 2016, which caused considerable damage due wind and storm surge.

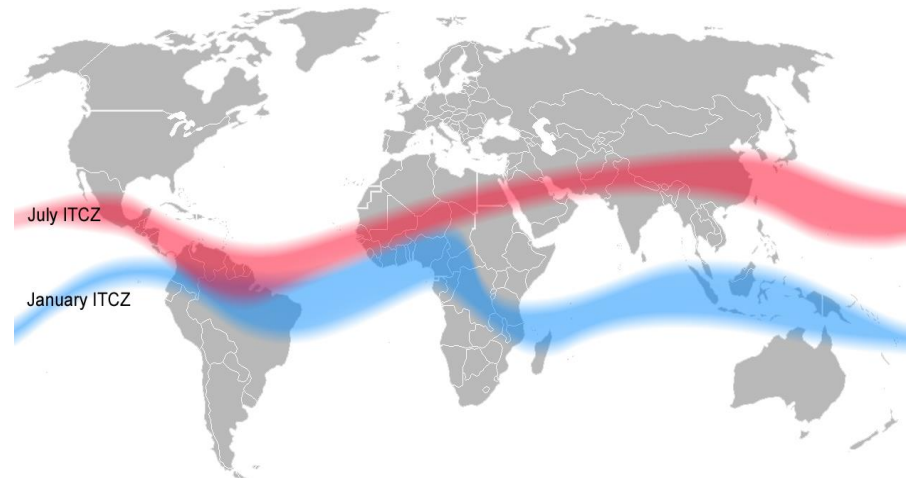
# ITCZ – Inter Tropical Convergence Zone

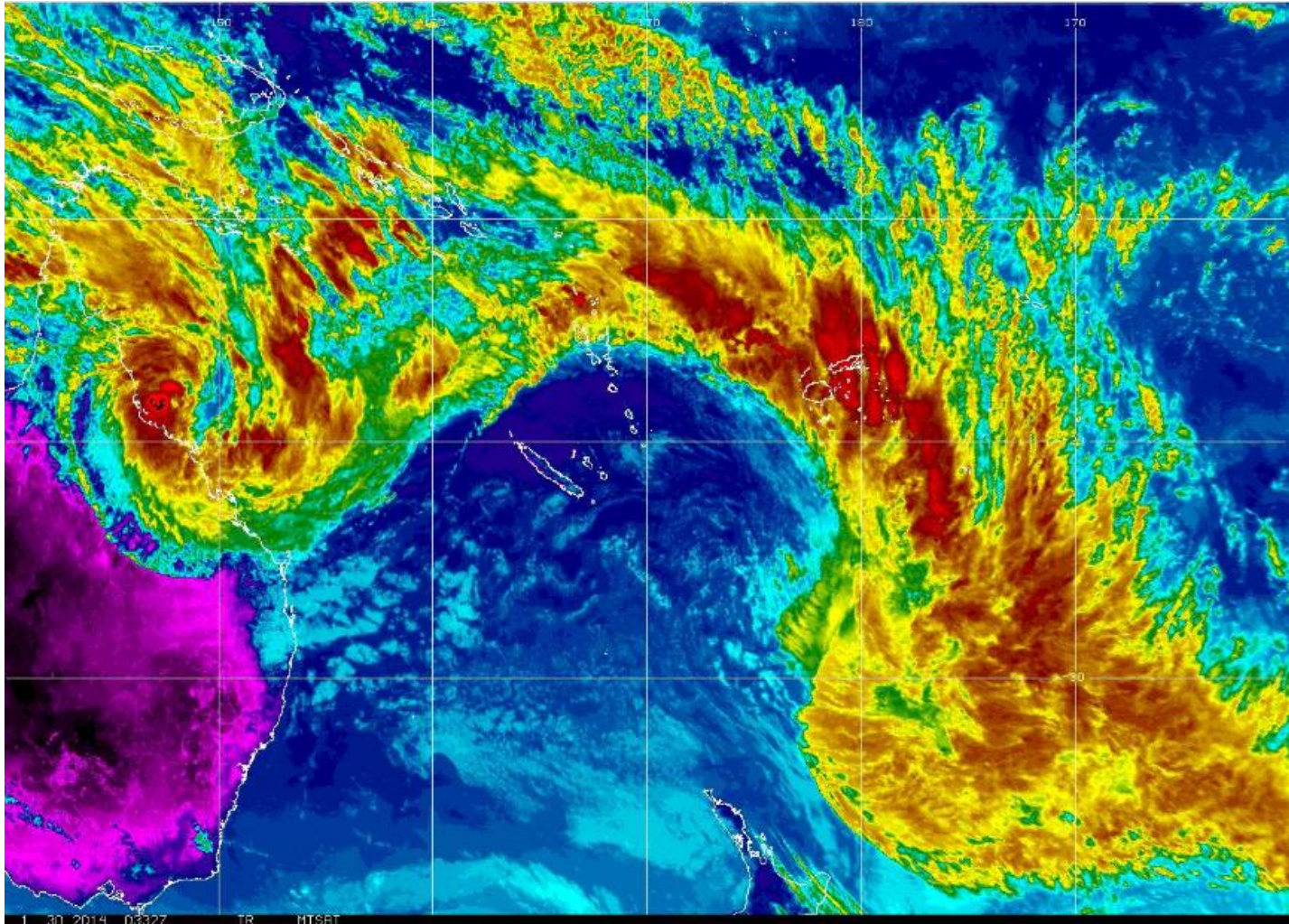


- ◆ Formed by the converging trade winds of the Northern and the southern hemisphere. The convergence produces thick clouds and abundant rainfall.
- ◆ It is the area of extreme instability; large amounts of water vapor and local effects largely govern the weather. On occasions of vigorous developments, massive CB clouds and heavy rain is likely. Clouds can extend up to 50,000ft. Ice accretion can be serious up to 35,000ft

Dry season – affects Kiribati  
(Christmas Island & Tarawa)

Wet season – affects  
Solomon Islands, Vanuatu, Samoa,  
Fiji, Tonga, Raratonga and  
New Caledonia



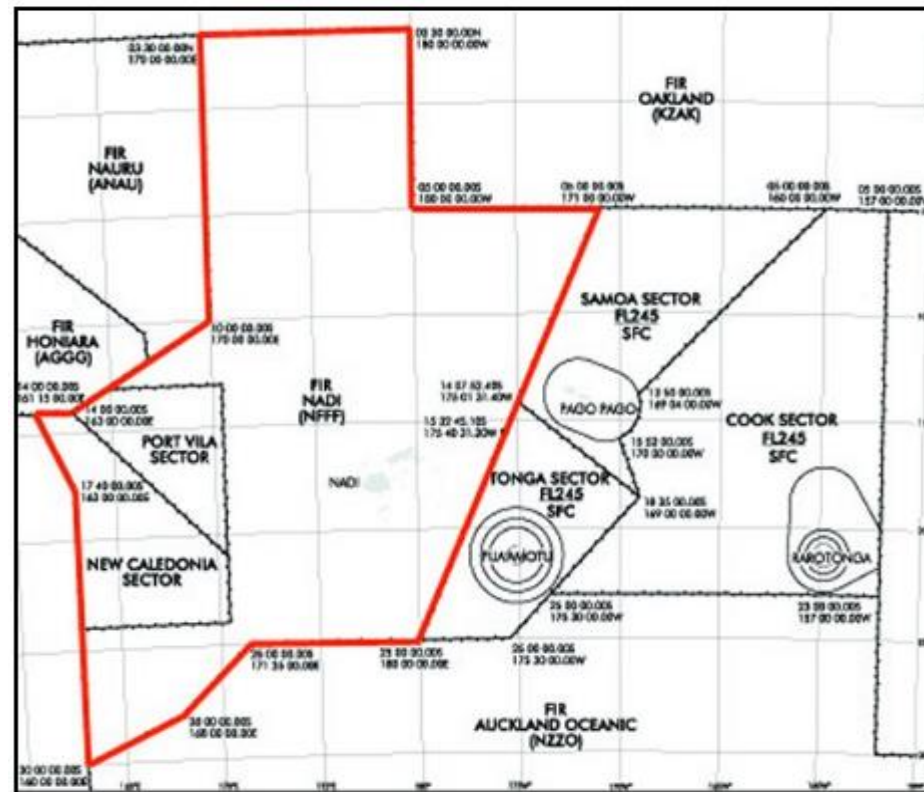






# Fiji Meteorological Service – area responsible for:

- ◆ *The Fiji Meteorological Service, as per agreement with the International Civil Aviation Organisation, functions as the Meteorological Watch Office for the Nadi Flight Information Region (FIR), which extends from Southern Kiribati to Tuvalu, Fiji, Vanuatu, Wallis and Futuna and New Caledonia. However, it still provides certain aviation forecast services to Cook Islands and limited services for Christmas Island (Line Islands), Tokelau, Samoa, Niue and Tonga which situated outside the Nadi FIR boundary.*



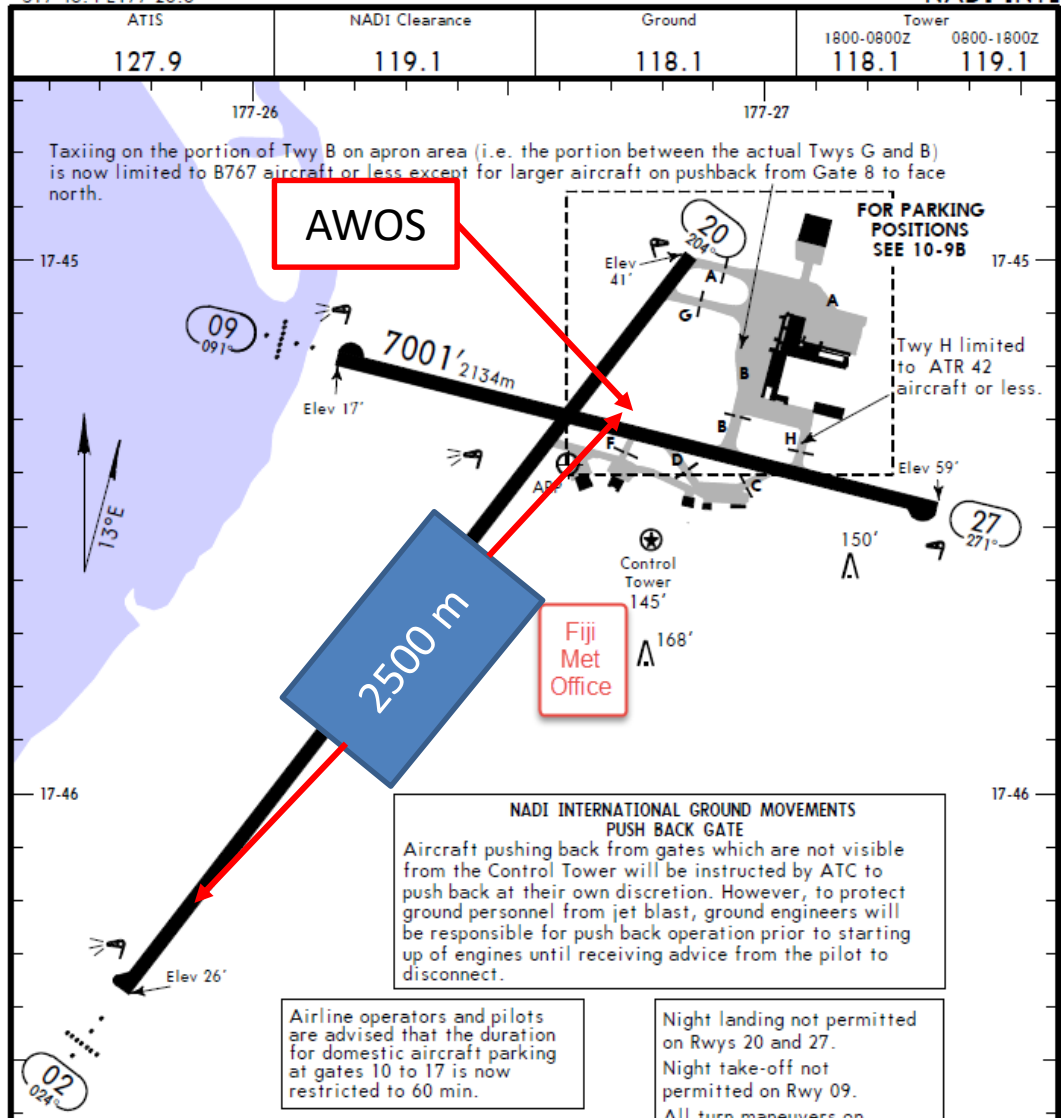
# Fiji Met – located in the airport compound.



NFFN/NAN  
 Apt Elev 59'  
 S17 45.4 E177 26.6

JEPPESEN  
 8 SEP 17 (10-9) Eff 14 Sep

NADI, FIJI IS  
 NADI INTL



# Dissemination of information

<http://www.met.gov.fj/index.php>



Home | About Us | Services | Careers | Awareness & Education | Feedback

**Current Warning** safe!!

- ▶ **Current Warnings**
- ▶ **Tropical Cyclone Tracks**
  - ▶ TC Threat Map
  - ▶ TC Forecast Track Map
- ▶ **Fiji Weather Forecast**
  - ▶ Public
  - ▶ Marine
  - ▶ 7 Day Outlook
  - ▶ Rainfall Map
  - ▶ Observation Data
- ▶ **Regional Weather Bulletins**
  - ▶ Niue
  - ▶ Tonga
  - ▶ Kiribati
  - ▶ Nauru
  - ▶ Tokelau
  - ▶ Tuvalu
  - ▶ Cook Is

South West Pacific Marine  
ZLM Broadcasts Time & Frequencies

**Media Release**

- ▶ Latest Media Release

**Tropical Cyclone Services**

- ▶ Media Release on 2017/18 TC Season Outlook
- ▶ 2017/18 Tropical Cyclone Outlook
- ▶ 2017/18 TC Season Procedures
- ▶ 3 Day TC Outlook

**Form Download**

- ▶ Historical
- ▶ Customer Survey

**Weather** | **Climate** | **Tropical Cyclone** | **Aviation**

▶ **Fiji Islands Map**  
Click here to view full map image

**Fiji** ★ Save

View larger map

Map data ©2018 Google | Terms of Use

▶ **Forecast Conditions**

Town	Forecast	Min.	Max.
Ba	Brief showers.	23	30
Labasa	Brief showers.	23	30
Lautoka	Brief showers.	23	30
Nabouwalu	Brief showers.	21	30
Nadi	Brief showers.	23	30
Nausori	Some showers.	22	30
Navua	Some showers.	21	29
Rakiraki	Brief showers.	23	30
Rotuma	Occasional showers.	21	31
Savusavu	Some showers.	22	30
Sigatoka	Brief showers.	23	30
Suva	Some showers.	22	30
Taveuni	Brief showers.	23	30
Tavua	Brief showers.	23	30

→

**Radar** **Satellite** **Maps**

**JAXA Realtime Rainfall Watch**  
Fiji Islands Rainfall

\* External Link to JAXA Realtime Rainfall Watch that shows rainfall estimated from satellite-data .

# Aviation tab



Home | About Us | Services | Careers | Awareness & Education | Feedback

☰ **Current Warning** Stay safe!!

▶ **Current Warnings**

☰ **Tropical Cyclone Tracks**

▶ **TC Threat Map**    ▶ **TC Forecast Track Map**

☰ **Fiji Weather Forecast**

▶ Public  
▶ Marine  
▶ 7 Day Outlook  
▶ Rainfall Map  
▶ Observation Data

☰ **Regional Weather Bulletins**

▶ Niue                      ▶ Tokelau  
▶ Tonga                    ▶ Tuvalu  
▶ Kiribati                ▶ Cook Is  
▶ Nauru

South West Pacific Marine  
ZLM Broadcasts Time & Frequencies

☰ **Media Release**

▶ **Latest Media Release**

☰ **Tropical Cyclone Services**

---

**Weather**    **Climate**    **Tropical Cyclone**    **Aviation**

METARs | TAFs 9-HR | **TAFs 24-HR** | TAFs Individual | ROFORs | ARFORs | SIGMETs | TCA Advisory

NFFN  
NCRG  
NFTF  
NSFA  
NFNA  
NLWW  
NGTA  
PLCH  
NFTV



**Fiji Meteorological Service**

ISO 9001:2015 certified provider of Aviation Meteorological Services

**Aviation Meteorological Services**

*The Fiji Meteorological Service, as per agreement with the International Civil Aviation Organisation, functions as the Meteorological Watch Office for the Nadi Flight Information Region*

# Na Draki Weather



Private weather and climate consultative service

- ◆ Provides weather overview & shipping forecasts on a paid subscription service.
- ◆ Daily updates received via email. More frequent updates when required.
- ◆ Provides a more specialized service than Fiji Met, but not the official aviation forecast.

# NGTA – Tarawa, Republic of Kiribati.



# Tarawa

NGTA vs NGTT metars







**Questions?**



VINAKA